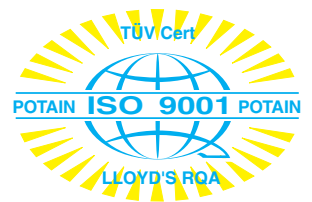
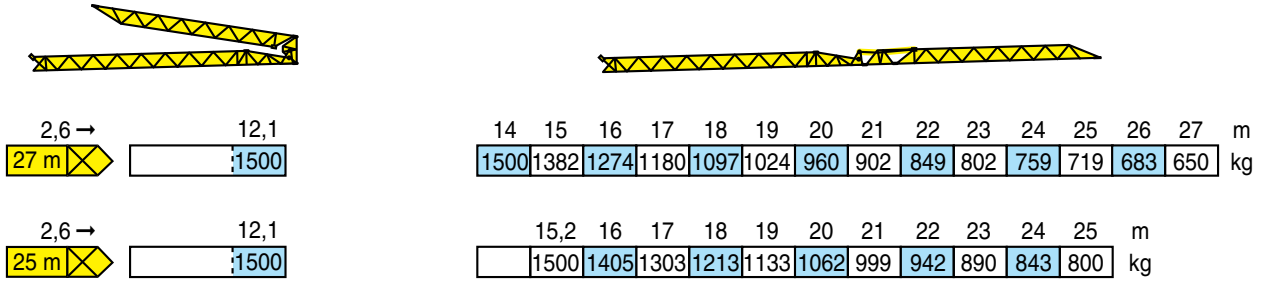


# GMR HD 21 A1

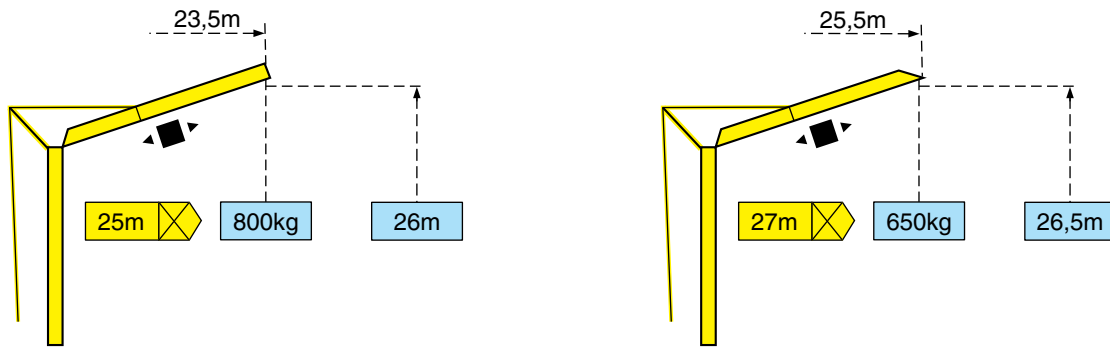
LHL 2



**Courbes de charges - Lastkurven - Load diagrams - Curvas de cargas - Curve di carico**



**Flèche relevée - Ausleger in Steilstellung - Luffing jib - Flecha izada - Braccio impennato**



**2 D2 V4**



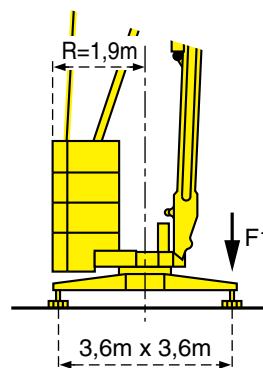
Chariot distributeur  
Verfahrbare laufkatze  
Traversing trolley  
Carro distribuidor  
Carrellino distributore

**2 D2 V4**



Chariot distributeur  
Verfahrbare laufkatze  
Traversing trolley  
Carro distribuidor  
Carrellino distributore

**Réaction - Eckdrücke - Reactions - Reacciones - Reazioni**



F1	● 13,5t	■ 8t
----	---------	------

⊕	7,8t
---	------

● En service  
■ Hors service

● In Betrieb  
■ Ausser Betrieb

● In service  
■ Out of service

● En servicio  
■ Fuera de servicio

● In servizio  
■ Fuori servizio

⊕ A vide sans lest ni train de transport avec flèche et hauteur maximum.

⊕ Ohne Last, Ballast und Transportachse, mit Maximalausleger und Maximalhöhe.

⊕ Without load, ballast or transport axles, with maximum jib and maximum height.

⊕ Sin carga, sin lastre, ni tren de transporte, flecha y altura máxima.

⊕ A vuoto, senza zavorra ne assali di trasporto con braccio massimo e altezza massima.

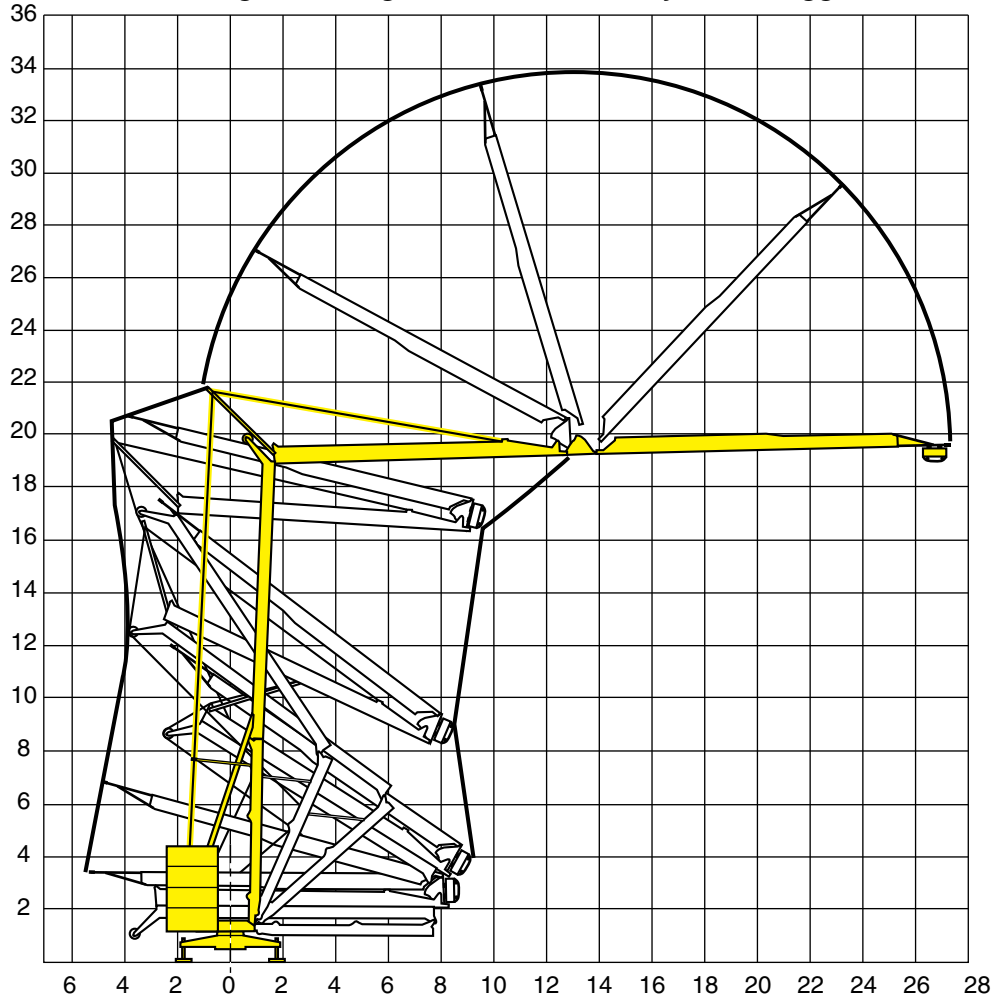
## Mécanismes - Antriebe - Mechanisms - Mecanismos - Meccanismi

				m/min	Kg	ch -PS hp	kW
Levage Heben Hoisting Elevación Sollevamento		6 PC 7		9,5	1500	6	4,4
				19	1500		
				38	750		
Distribution - Katzfahren - Trolleying Distribución - Distribuzione		2 D2 V4		18 - 36		2	1,5
Orientation - Schwenken - Slewing Orientación - Rotazione		RVF 30		0 → 0,9 tr/min - U/min - rpm		1,5	1,1
Réseau - Netzstrom - Mains supply - Red - Rete elettrica					CEI 38 IEC 38	400V(+6%-10%) 50 Hz	
Puissance électrique nécessaire - Anschlusswert - Necessary electric power Potencia eléctrica necesaria - Potenza elettrica necessaria					10 kVA		
Groupe électrogène - Stromaggregat - Generator set - Grupo electrogeno - Gruppo elettrogeno					*		

\*Nous consulter - Auf Anfrage - Consult us - Consultarnos - Consultateci

Conforme aux directives CEE 84/534 et 87/405 sur le niveau acoustique - Gemäss EWG-Richtlinien 84/534 und 87/405 für den Schall- Leistungspegel  
In compliance with the EEC 84/534 and 87/405 Instructions on noise level - Conforme con las directivas CEE 84/534 y 87/405 sobre el nivel acustico  
Conforme alle direttive CEE 84/534 e 87/405 sul livello acustico

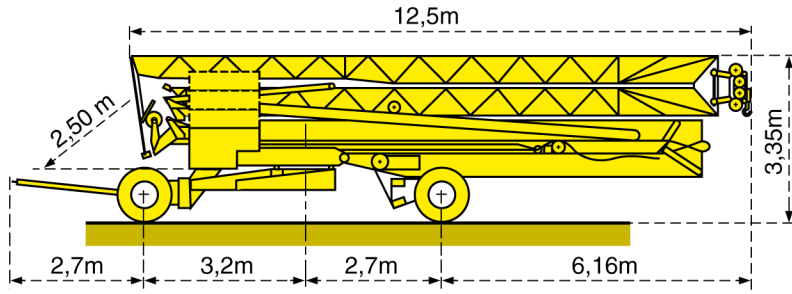
## Montage - Montage - Erection - Montaje - Montaggio



# Transport - Transport - Transport - Transporte - Trasporto

18/27

15A/25A

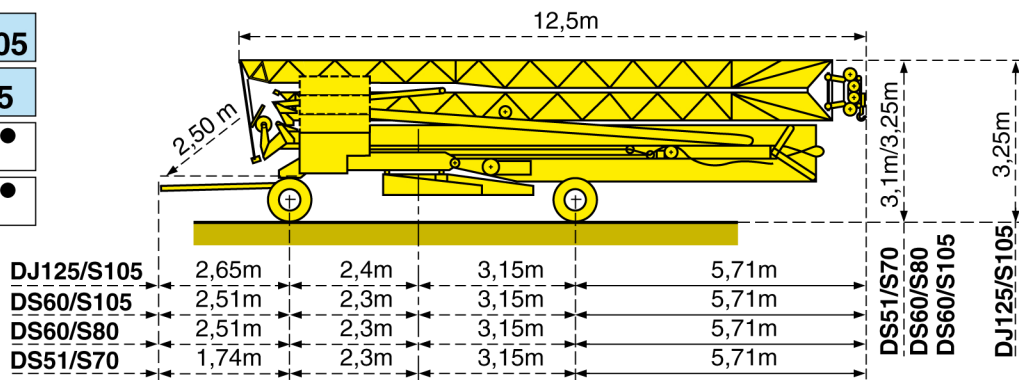


DJ125/S105

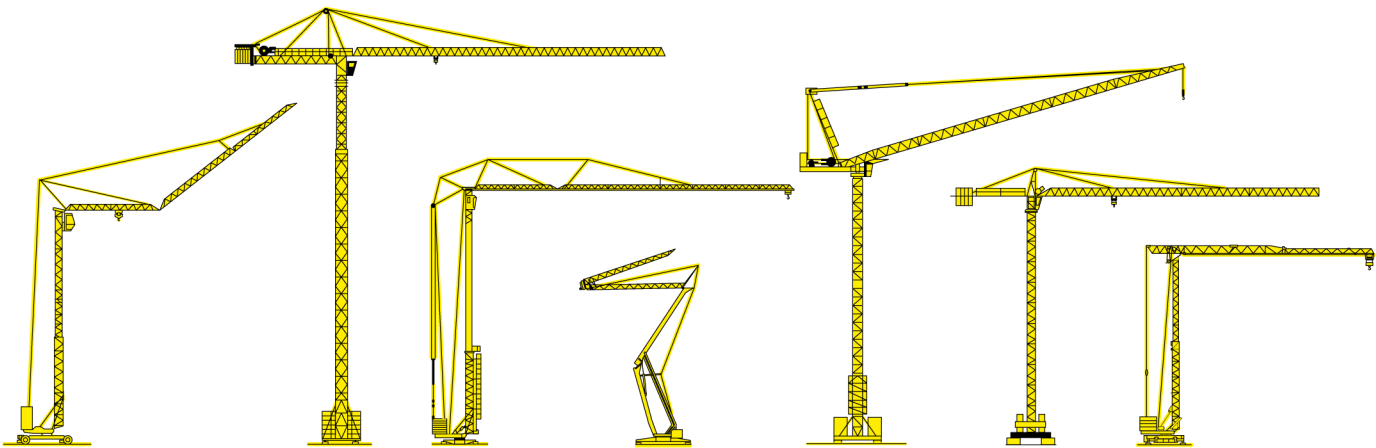
DS60/S105

DS60/S80 ●

DS51/S70 ●



● Chantier  
Baustelle  
Site  
Obra  
Cantiere



Document pour usage commercial uniquement - Benutzung dieser Unterlagen nur für Verkaufszwecke - Document for commercial use only - Documento para uso comercial unicamente - Documento per uso commerciale solamente

Copyright.Reproduction interdite © POTAIN 1994

GMR HD 21 A1

Réf. 1994.13 LHL 3

Modifiche riservate

Modificaciones reservadas

Subject to modification

Änderungen vorbehalten

Modifications réservées

Printed in France

Réalisation SODIPE